



Ice cover on Lake Mendota Photo: John Magnuson



Groundwater Flooding Photo: Peter Gorman



Brook Trout Photo: John Lyons

How the Wisconsin Initiative on Climate Change Impacts (WICCI) serves as a model to solve contemporary science and policy issues

ILS 372
Carolyn Rumery Betz
November 17, 2011

Wisconsin Initiative on Climate Change Impacts (WICCI)

- Began in 2006 between UW-Madison's Nelson Institute for Environmental Studies and the Wisconsin Department of Natural Resources
- 2007 - Working groups created through grass-roots efforts; Science Council co-chairs named in Fall organizational structure developed
- Formally announced in early 2008 as a “boundary organization” that blends the lines between science and policy-making
- In 2011 includes >200 participants; 15 working groups; advisory council and a science council

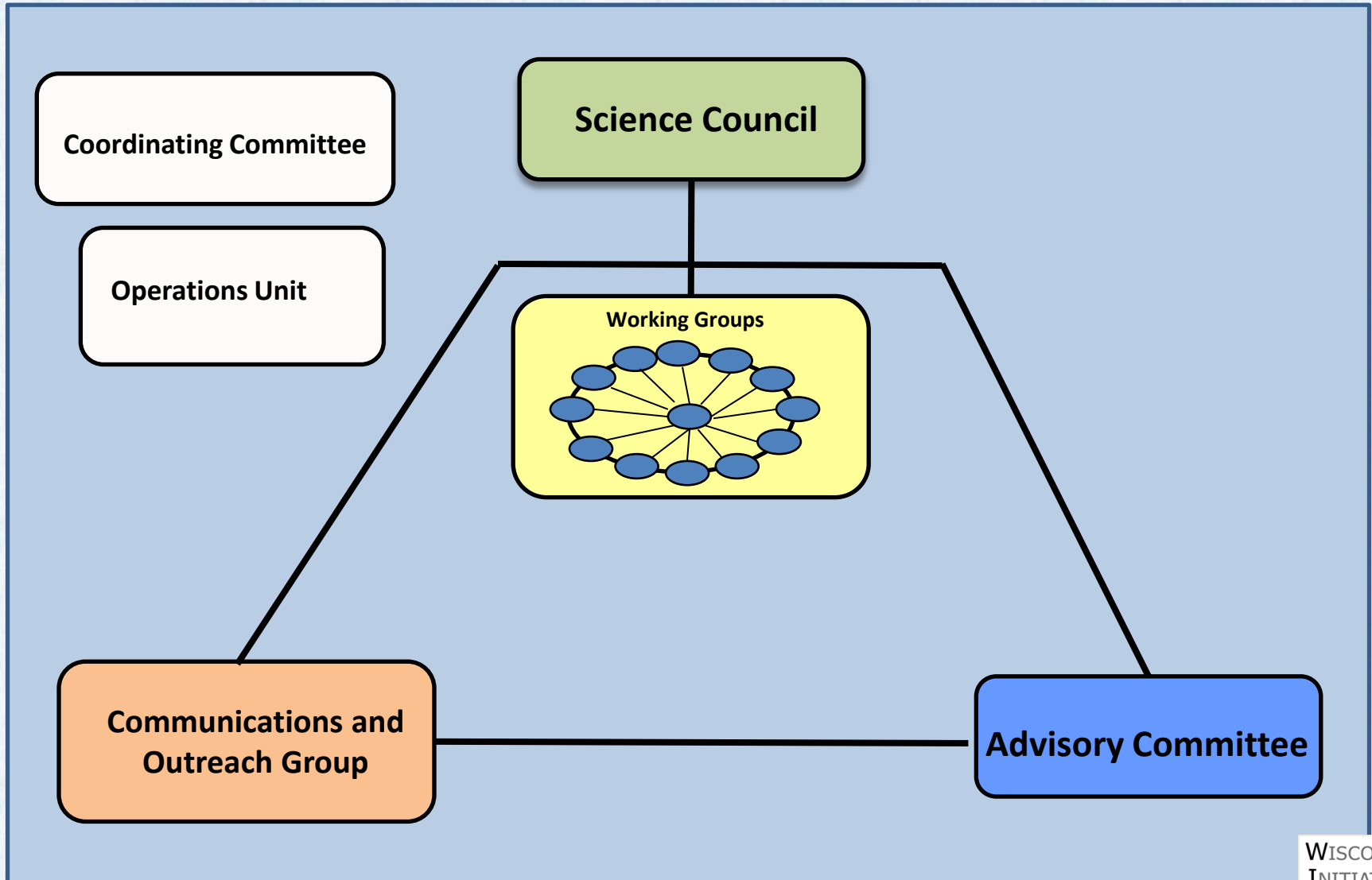


WICCI's Mission



- ❖ Assess and anticipate climate change impacts on specific Wisconsin natural resources, ecosystems and regions
- ❖ Evaluate potential effects on industry, agriculture, tourism, and other human activities
- ❖ Develop and recommend adaptation strategies

WICCI's Organizational Structure



WICCI's Structure

- **Science Council** identifies critical or emerging scientific questions related to the mission of WICCI
- Provides leadership on climate change impact issues in Wisconsin
- Organizes and coordinates Working Groups

- **Working Groups** identify potential risks and vulnerabilities pertinent to working group topic area or geographic region
- Summarize existing information on climate change impacts
- Identify data and research needed to assess future impacts
- Recommend adaptation strategies

- **Outreach Group** works to increase awareness of climate change and help build capacity to adapt
- Primary audiences are K-12 educators, decision-makers and the general public

- **Advisory Council** makes the science behind WICCI relevant to the citizens and stakeholders of Wisconsin.
- Represents businesses, NGOs, cities, agencies, recreation, agriculture

Over 200 Collaborators

5 Federal Agencies

13 State Agencies

1 Tribal Group

12 Local/ Municipalities

10 Universities/
Extension

20 NGOs

8 Private Partners

WICCI Collaborators

Federal

U.S. Department of Agriculture
U.S.D.A. Natural Resources Conservation Service
U.S. Fish and Wildlife Service
U.S. Forest Service
U.S. Geological Survey

State

State of Wisconsin Commissioner of Insurance
Wisconsin Coastal Management Program
Wisconsin Conservation Congress
Wisconsin Council on Forestry
Wisconsin Department of Transportation
Wisconsin Department of Agriculture, Trade and Consumer Protection
Wisconsin Department of Health and Family Services
Wisconsin Department of Natural Resources
Wisconsin Emergency Management
Wisconsin Geological and Natural History Survey
Wisconsin Public Service Commission
Wisconsin State Climatology Office
Wisconsin State Legislature

Tribal Groups

Great Lakes Indian Fish & Wildlife Commission

Local/Municipal

City of Fitchburg Engineering
City of Madison Storm Water Utility
City of Racine Water & Wastewater Utility
Columbia County Land & Water Conservation
Dane County Land Conservation Division
Greater Milwaukee Committee
League of Wisconsin Municipalities
Madison & Dane County Public Health Department
Madison Metropolitan Sewerage District
Milwaukee Metropolitan Sewerage District
Southeast Wisconsin Regional Planning Commission
Wisconsin Towns Association

Universities

Lakehead University
UW Extension
UW Sea Grant
UW-Engineering Professional Development
UW-Green Bay
UW-La Crosse
UW-Madison
UW-Milwaukee
UW-Milwaukee Great Lakes WATER Institute
UW-Stevens Point

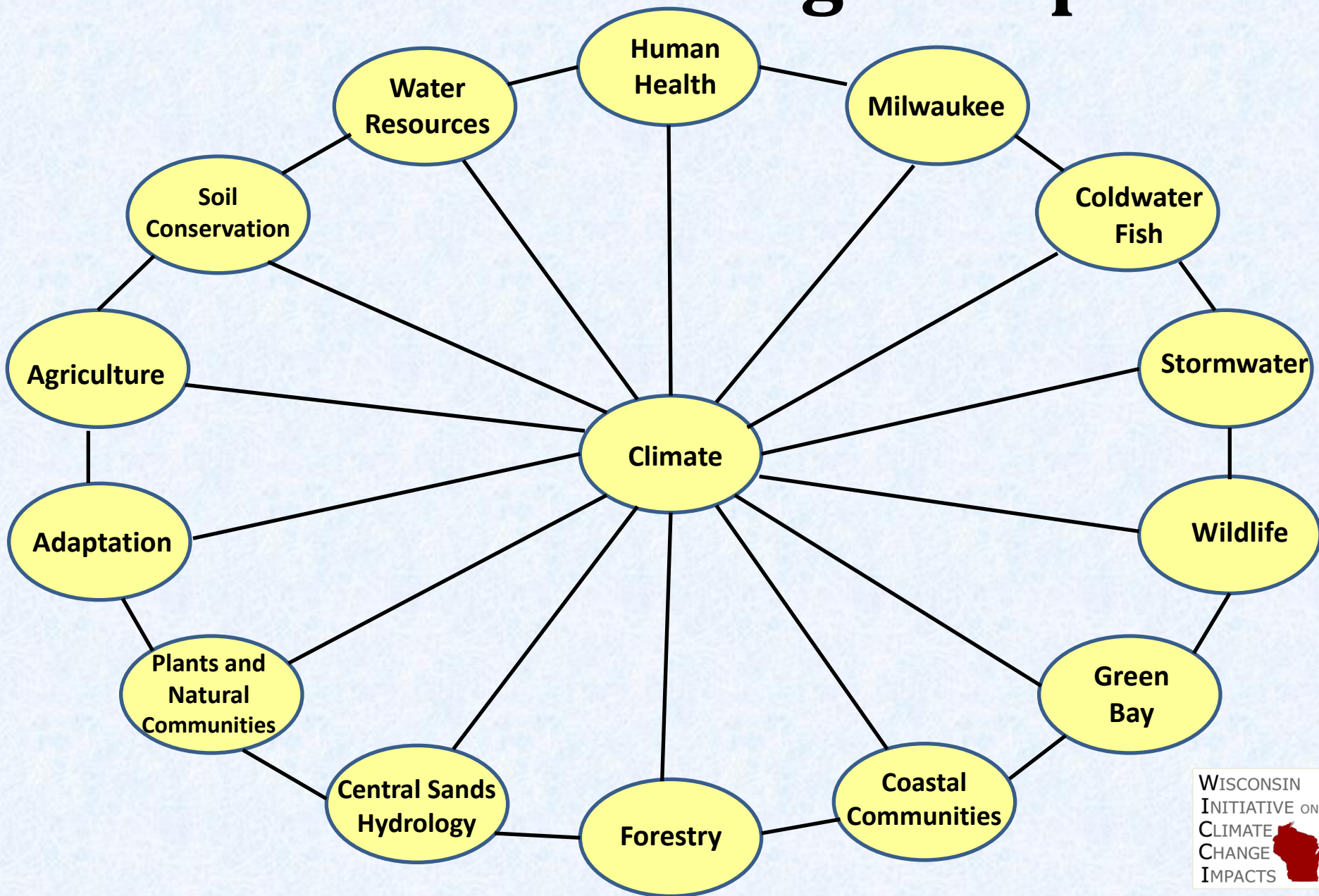
NGO's

1000 Friends of Wisconsin
American Birkebeiner Ski Foundation
Clean Wisconsin
Education Communications Board
Fox-Wolf Rivers Environmental History Project
Grow North Regional Economic Development Corporation, Inc.
Natural Areas Preservation Council
Nature Net
New North, Inc.
Professional Dairy Producers of Wisconsin
Second Look Holsteins
The Association of State Floodplain Managers
The Nature Conservancy
Trout Unlimited
Wisconsin Citizen-Based Monitoring Network
Wisconsin Environmental Initiative
Wisconsin River Alliance
Wisconsin Paper Council
Wisconsin Wetlands Association
Wisconsin Wildlife Federation

Private Sector

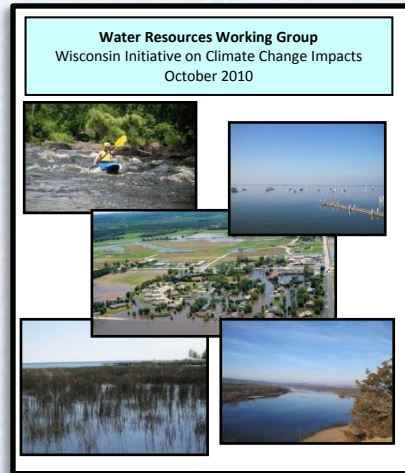
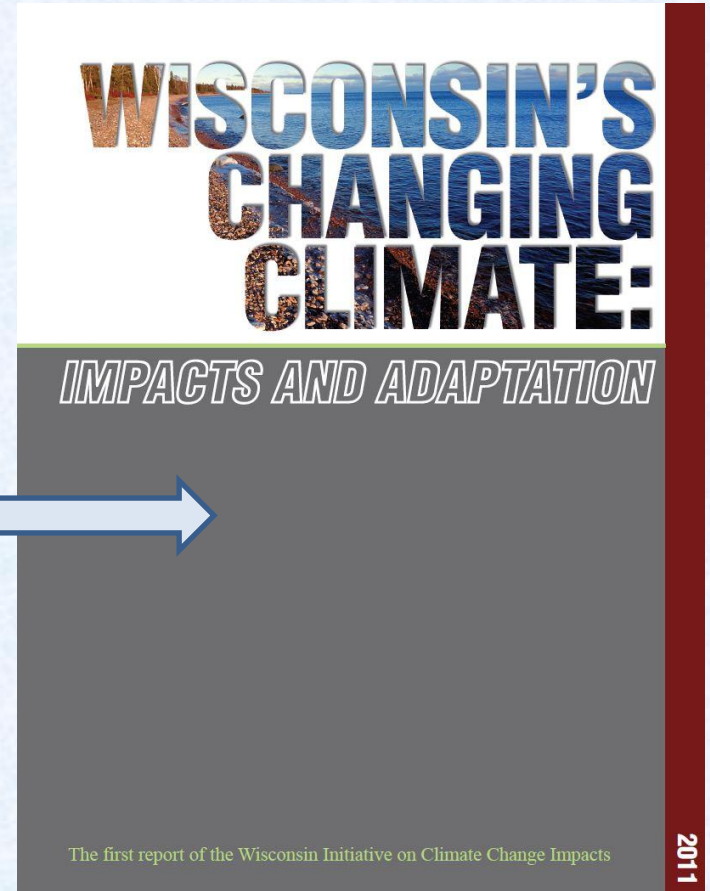
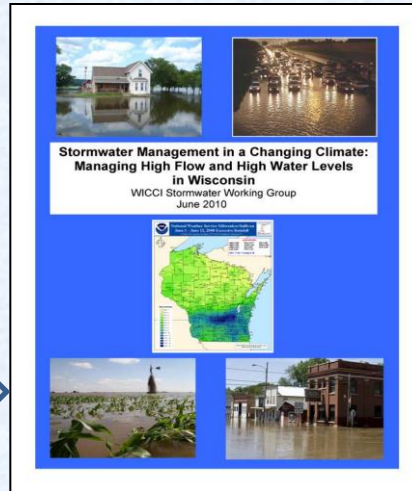
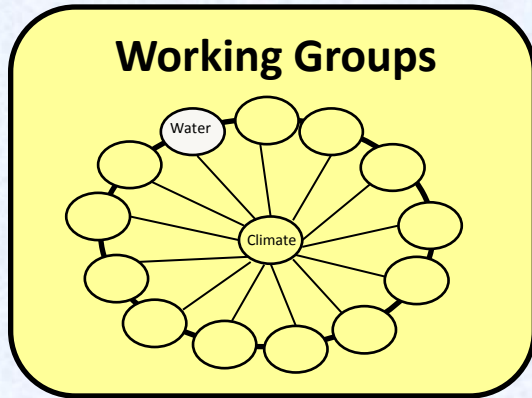
AECOM
Alliant Energy
HNTB Corporation
Montgomery Associates-Resource Solutions
MSA Professional Services, Inc.
S.C. Johnson
Short Elliott Hendrickson, Inc.
We Energies

WICCI Working Groups



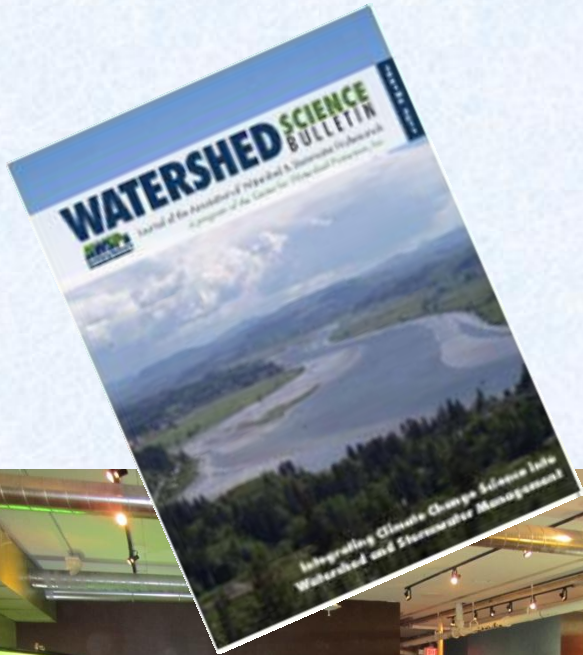
First Assessment Report

Released February 2011



wicci.wisc.edu/

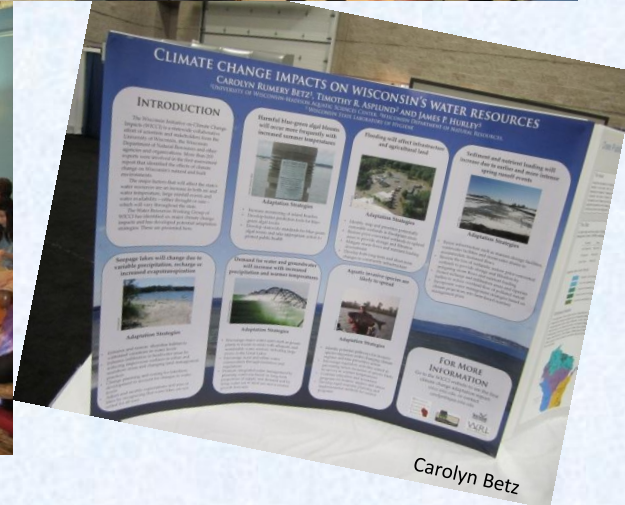
Reaching out to decision makers, educators and the general public



Carolyn Betz



Carolyn Betz



Carolyn Betz